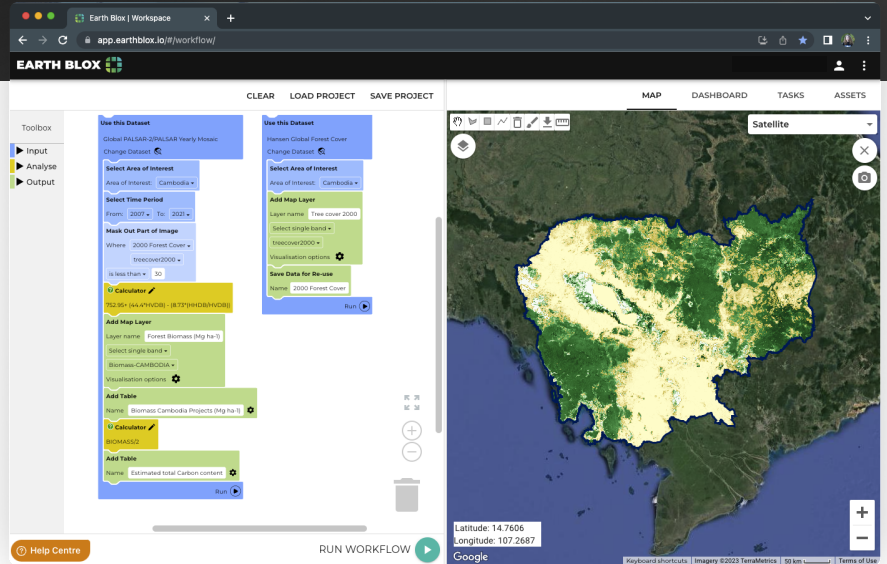


Rapid due diligence for Nature-Based Solutions projects.

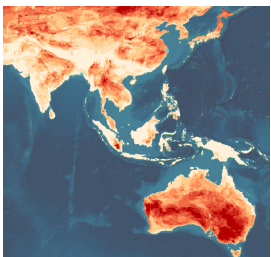
Decisions on Nature Based Solutions (NbS) are under greater scrutiny than ever before and the quality of the projects you purchase credits from matters.

You don't want to be accused of greenwashing, and you don't want to discover that the projects you've paid for are offsetting less carbon than claimed.

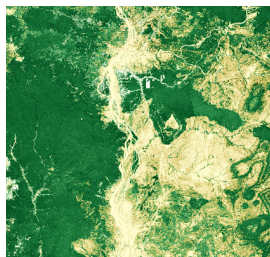


Assessing change to forest biomass over time in Cambodia

With data going back 40 years, satellite imagery is the most efficient way to analyse and compare nature and climate related risks and insights for NbS projects worldwide.



Climate and environment risk



Biomass and carbon estimation

Use Earth Blox to:

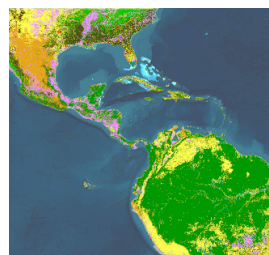
- Quickly assess if a project has high-quality carbon offsets
- Verify project developers' claims using independent data
- Safeguard your reputation and defend integrity of projects by demonstrating a credible baseline assessment was conducted



Biodiversity



Deforestation



Land cover change

Full customisation and control



Build customisable and repeatable analyses in minutes using the drag-and-drop workflow builder.



Access hundreds of global datasets from Earth Engine, Planet and other commercial providers in a single platform.

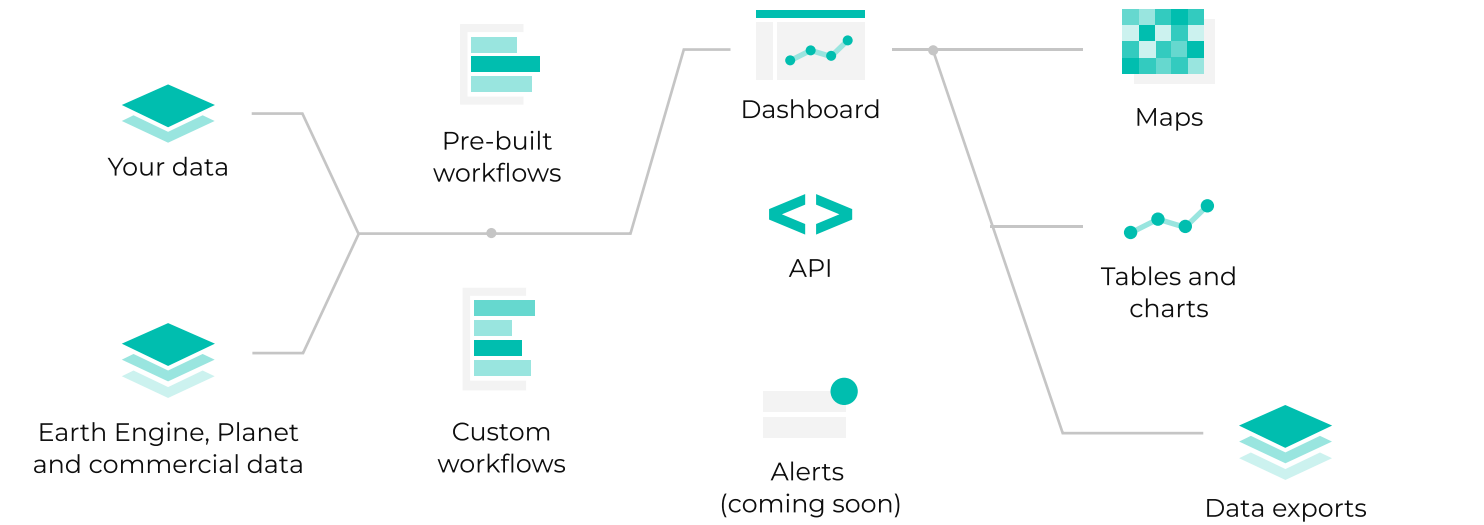


Ownership and control of data inputs and methodologies give you full transparency in reporting to customers and stakeholders.

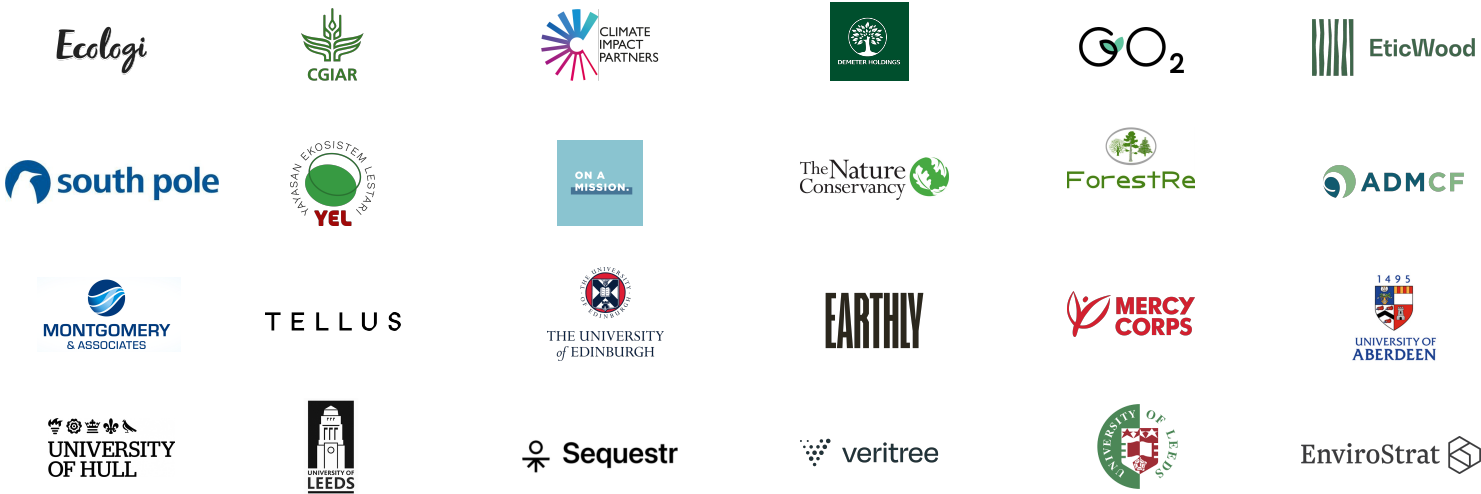


Cloud-native, reactive and serverless architecture enables fast processing of petabytes of data for rapid analyses.

How Earth Blox works



Meet our customers



earthblox.io
sales@earthblox.io



Quosient Ltd. 6 Redheughs Rigg,
Edinburgh, Scotland, EH12 9DQ (SC644175)