



## Fast, reliable deforestation metrics for EUDR compliance

The EU Deforestation Regulation (EUDR) requires businesses to prove their supply chains are deforestation-free. Earth Blox delivers the key deforestation metrics you need to comply – quickly and accurately – so you can submit your due diligence statements with confidence.

### Rapid insights

Get actionable deforestation data in minutes, to speed up decision-making.

### Built for compliance

Build trust with regulators by providing verifiable, auditable metrics.

### Global coverage

Assess risks across your entire supply chain using trusted geospatial data.

#### 1. Load the EUDR package in Earth Blox

Assess deforestation risks for before and after 2020.

#### 2. Select your land plots for analysis

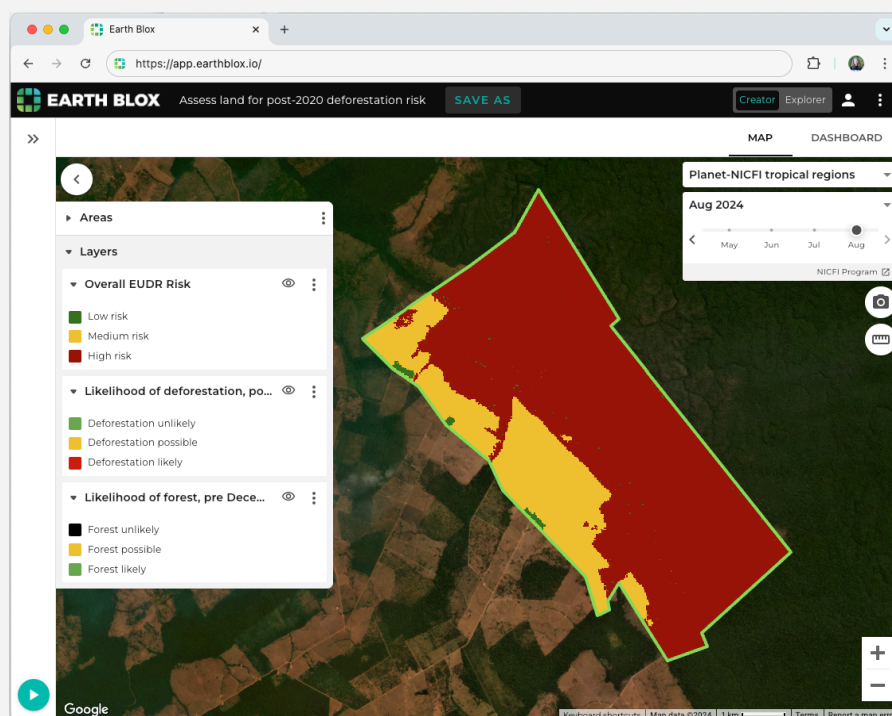
Import relevant land plots from your supply chain.

#### 3. View and export your results

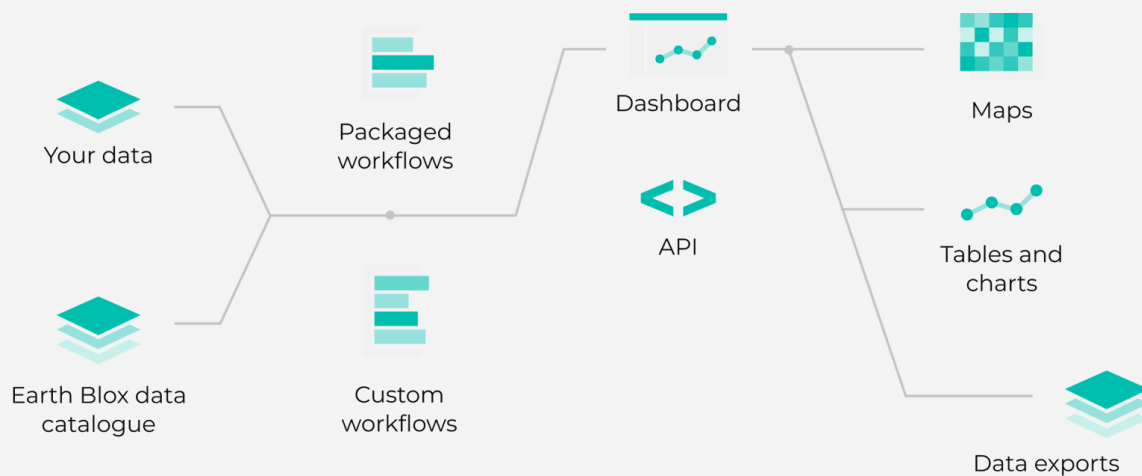
Use the Earth Blox API to add to due diligence statements.

#### 4. Investigate high-risk plots

Assess climate hazards, land use and harvesting to understand deforestation risk.



# Platform overview



## Scale your insights

Powered by Google Cloud, Earth Blox delivers fast, efficient geospatial data processing, ensuring consistent performance whether you're analysing a handful of locations or millions.



## Seamless integration

Earth Blox seamlessly integrates with your IT infrastructure through a REST API. As a Google Cloud Ready solution, it's available on the Google Cloud Marketplace for easy deployment and management.



## Comprehensive support

Our customer success team accelerates user adoption with onboarding and training. Additional support is available via our helpdesk and our Knowledge Base offers detailed documentation and self-guided tutorials.



## Enterprise-grade security

At Earth Blox, your security is our priority. We leverage Google Cloud's enterprise-grade encryption and authentication, and our Information Security Management System is ISO27001-aligned to protect the confidentiality, integrity, and availability of your data.

**anew**



**south pole**

The Nature Conservancy

Book a demo at  
[earthblox.io/demo](https://earthblox.io/demo)

 **EARTH BLOX**

Quosient Ltd. | 5 South Gyle Crescent Lane, Edinburgh, EH12 9EG | [earthblox.io](https://earthblox.io)

